

MORETON BAY GAME FISH CLUB LTD.

# The Magazine



ISSUE NO. 2 - 2019  
WINTER



**MORETON BAY  
GAME FISH CLUB LTD.**  
PO Box 371, Capalaba Qld 4157  
**Phone:** 07 3286 5762  
**Email:** admin@mbgfc.com.au  
**Web:** www.mbgfc.com.au

**OFFICE BEARERS / COMMITTEE**

**President**  
NICK CURREY  
0448 858 855  
nacurrey@bigpond.net.au

**Vice President**  
JOHN MOORE  
3829 0863 - 0434 344 228  
redlandbaygarage@bigpond.com

**Secretary**  
CAROL HUTTON  
3822 4057  
admin@mbgfc.com.au

**Treasurer**  
MICHELE HICKS

**Fishing Captain**  
TIM BILLING  
0481 189 416  
tjb778@gmail.com

**Committee**

SHARYN MOORE  
0417 631 759  
sjcsm@optusnet.com.au

DAVID HUTTON  
0411 725 299  
darhut56@hotmail.com

ROSS GARRATT  
0414 664 584  
rossgarratt@bigpond.com

PAUL DITCHFIELD  
0412 152 880  
pditchfi@bigpond.net.au

LOUISE DITCHFIELD

CLINTON HICKS  
0421 493 580  
clintonwadeh@gmail.com

TIM BILLING  
0481 189 416  
tjb778@gmail.com

GREG FLYNN  
0418 877 494  
greganddee@icloud.com

**LIFE MEMBERS**

GREG CUFF  
3206 9104  
0412 745 854  
gregoryc1@tpg.com.au

BRIAN KIRKBY (Deceased)



**Cover Photo:** "Blade Runner" winner of Champion Team at the Garmin Back 2 Tanga 11, doing it again at Fraser Island.





**WELCOME** to the Winter edition of “*The Magazine*”. The start of the year kicked off with a fantastic light tackle bite off the Gold Coast that seemed to last forever and club members that were able to get down there caught some great black marlin in the 25-80kg range

which can be really tough fish on 8 kg tackle.

During early February, the club maintenance committee, Peter and volunteers took on the task of replacing the roof and pylons over the clubhouse that had rusted out. Within a week, the old roof was down and cut up, and the new roof installed. This was an extraordinary effort and it should last another 25 years. A huge thank-you to all those that planned and then executed the job. Many thanks also to Stratco, who heavily discounted the materials. It is a great place to take the family for a few days or week on the school holidays. Bookings can be made through the Secretary.

The weather was rough but just fishable for the MBGFC/ Garmin “Back 2 Tangas 11” tournament held on the first weekend in March. This resulted in a reasonable turnout with 24 registered boats and 93 anglers and crew in attendance. Many thanks to all of the captains, crews, sponsors and volunteers who made it another successful tournament. Congratulations to all the winners and participants and hope to see you all back in March. A comprehensive reports and pictures are in this issue.

Remember last year when veteran member, John Wruck, who kindly donated all of his fishing gear to the Club to distribute to members, especially the juniors. Well it was great to see junior, Robbie Flynn get out there and on Johns 15kg rod and reel, caught a great black marlin. Greg has included some pictures in the magazine.

An extraordinary run of small (micro-marlin) occurred in late May and early June off Fraser Island spit. Club boats Reel Affair and Blade Runner did a quick 3 day trip up there. They caught and tagged 14 marlin between the boats on light line. A top effort and see the article Greg has put together.

With the recent departure of former secretary/treasurer, I would like to express my gratitude to the committee members who stepped up to fill the positions. Especially Carol, who has quickly become a very competent Secretary and also to Michele who has taken on the Treasurer role and has had worked hard to sort out the accounts. She has been assisted by members.

We created a Fishing Captain position and Tim Billing has stepped into the role, sorting “all things” fishing, reconciling the tags and getting Gamebase current. Tim has also taken on the magazine editor role, so he will be hassling members for pictures and articles going forward.

Behind the scenes there have been a number of members who have provided support over and above the norm, and we all thank-you.

It is again time for membership renewals and these have been capped as per previous years (\$100 for full member). Members should have received emails from Carol regarding renewals. We also created a Perpetual Membership category which is \$1000 for life, and it was pleasing to see good uptake. There are still a few places left and if you are interested please talk to Carol.

The Annual General meeting dates have yet to be finalised and will be either the last week in August or second week in September. Formal notification will be emailed around along with committee nomination forms.

On behalf of the committee, we would like to wish all members and their families a safe winter out on the water. With plenty of whales around it is good time to take the family out, and also drop the lines in for a sneaky snapper and pearl perch.

Keep an eye on the Facebook page and blogs as I reckon there will be Marlin and Sailfish bites right through till September. Remember there is a trophy for last and first billfish of the season.

Best wishes and tight lines.

**Nick Currey**

# GARMIN BACK 2 TANGA 11 Tournament



The tournament was run on first week of March in very average sea conditions, due to remnant conditions from the previous week's cyclone. One week before the tournament, the committee reviewed weather forecasts and decided to hold the tournament as planned, as the "Back-up dates" showed "worse" conditions (20-25 knots). Typically, BOM got it wrong and backup date weekend was 10-15 knots!

There were 24 boats registered to fish both the Game and "Funfish" sections. There were 56 "QGFA registered anglers" for the game fishing section, 14 for the Funfish, 12 crew with 5 senior female and 9 juniors.

Over the 2 days fishing: 128 Strikes, 104 hook-ups, 47 fish tagged or landed (6 Black Marlin, 1 Sailfish, 16 Tuna, 1 Mahi Mahi and Mackerel, 3 wahoo).

There was an excellent prize pool donated from Sponsors (Product value - \$25,000) plus another \$3,500 in raffle prizes and also give away product show bags. Committee spread the prize pool out to include 28 prizes in the Game fishing section.

Of note, was the Champion team on Blade Runner – Rick and Troy Winsor, donated back a whole lot of Prize lures and other kit to be re-assigned to the juniors, resulting in all juniors walking away with gear.

Champion Senior Male/Overall Champion: Rick Winsor

Champion Female: JJ Gorman

Champion Junior: Michael Behrens

Boat over 8m: Deep Blue

Under 8m: Blade Runner



Overall there was positive feedback from participants, apart from some grumbling around the weather and tough conditions and lack of fish. The catering was first class again, beer cheap and people enjoyed the live music on both nights.

Financially, the tournament made a profit.

# GARMIN BACK 2 TANGA 11 Tournament



# GARMIN BACK 2 TANGA 11 Tournament



# GARMIN BACK 2 TANGA 11 Tournament



## Gold Coast Blue Marlin Classic Tournament Report from Luna



**Over** the 6<sup>th</sup> and 7<sup>th</sup> April we fished the Gold Coast Game Fish Clubs Garmin Blue Marlin Classic 2019 with Robbie Flynn and Clinton and Michele Hicks.

We headed to the coast Friday evening for the briefing and Calcutta. 43 Boats were entered, and the Calcutta ended up totaling \$24,000. The bidding for Luna became too rich for us when it went for more than Bill Billson boat Allure so we let it slide.

We headed out from Manly through South Passage bar and despite the consistent South Easterly's from the last week we were met with a relatively easy run (after the atrocious conditions at Back to Tangas a month earlier) out to Point Lookout Canyons.

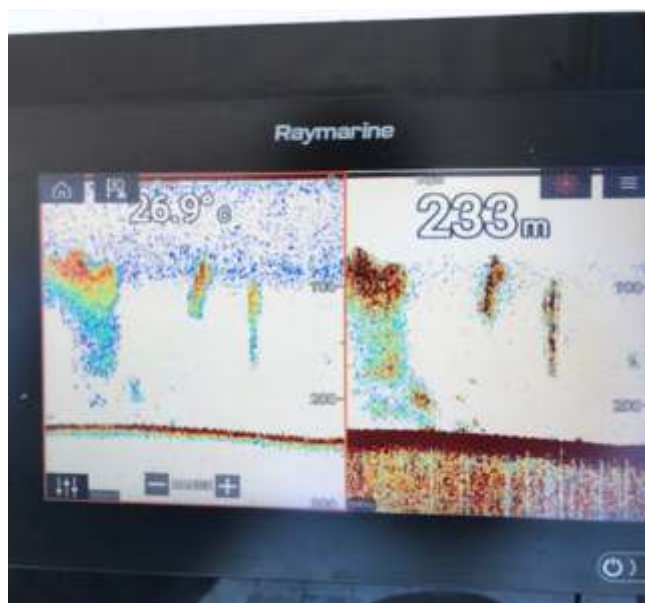
Two minutes after Start fishing French Look III hooked up and it was on. With lures in we trolled around looking for birds and bait and found a number of the big-name boats were fishing the same area. There were a few birds in patches and at one stage I headed towards some activity in deeper water while Zeus turn the other way, 5 minutes later we heard them hook up on what turned out to be a 26.7kg Yellowfin Tuna.

We couldn't hear game base at all for the skeds but could clearly hear most of the other boats. One interesting feature of the skeds was each boat was provided a chart with GPS marks of the main fishing spots and the sponsors names in the grid squares, so when you radioed in your sked you also said where you were fishing. (Luna 0-0-0 Satisfaction Pools) That way everyone in the competition knew what was happening where. (Including French Look III still hooked up to that first fish at the first and second skeds and took over five hours to land their first fish.

During Saturday most of the activity was around us, at Lookout Canyons or down between Jim's and the Riv grounds. Every time I would go the head south, we would see something that would have me stay in the area.

About 1:30 a we saw some bait on the sounder and started to get excited. At 1:45 we had our first strike on the shot gun, but no hook up, ten minutes later we had another strike on the short rigger but again the hooks missed. As I circled the bait school, I came across the edge of another one, as we passed the edge of that bait, we had a solid hook up on the shot gun, the Tiagra screamed and we all sprang into action clearing the spread, but the fish came off at the end of its first





jumps. As we were resetting the spread the long corner (\$5 bargain bin lure) went off and Robbie was on and settled into the chair. The fish took a lot of line which we were able to get back and Clinton tagged the fish at 2:37. We kept working the bait schools but as the paperwork had to be handed into game base by 6pm and it was a long run to Southport Yacht Club I called lines in at 3:45.

Day one summary for the fleet was 24 Blue and 2 Stripped Marlin tagged.

The conversations over dinner was all about where to fish Sunday. Jefferson Morrow on Seafox had seen plenty of action near him north of the Riv grounds but with the amount of bait we had seen we decided to head back up to Lookout Canyons. After a 2hr run up we couldn't find the bait anywhere, so we headed back to where we noticed some birds working on the way up and found some large schools of bait.

We worked around the bait for most of the day, tried catching livies, saw birds, dolphins, and small tuna. We had a soft strike on the shot gun at 12:30. As the day came to a close, we were getting ever more confident of a hook-up, but it wasn't to be, and we headed back to the Gold Coast. Sunday was a quieter day overall with only a handful of fish tagged, mostly in the last 30 minutes. French Look made up for their 5-hour ordeal with a Tagged Blue Marlin in 2 minutes. (The video is on facebook and worth a watch.)

The presentation Sunday night was a drawn-out affair with the highlight being Dave Trask celebrating Big Businesses win with a Chequey. Robbie's Blue had him equal on points with the Junior Champion but he lost on count back with the other fish being tagged earlier on Saturday.

In summary we travelled 262 NM for one Blue Marlin in great conditions and had a fantastic time, and can't wait to get out there again.

## **MEMBERSHIP RENEWALS**

**NOW  DUE**

**Fishing points will not count  
unless  
memberships are renewed**

## **MBGFC AGM**

**Will take place on 11th September  
at the  
Redlands Sporting Club**

***Further details and voting forms  
will be emailed to members  
end of July.***

***Must be financial members to vote.***



## True CHIRP sonar technology in perfect fully network capable combos.

Give your boat the perfect combination of performance, ease of use, and feature integration with the GPSMAP 7400xsv chartplotter/sonar combo series. Available with 7", 8", 10", 12" or 16" multi-touch widescreen displays, they feature built-in advanced 1kW dual CHIRP sonar, the most sophisticated sonar technology available for the fishing and boating public. They also include both Garmin CHIRP DownVü™ and CHIRP SideVü™ scanning sonar that provide the clearest scanning sonar images on the water, with all-in-one transducer options. All this plus premium navigation and full networking capabilities. It is quite simply the finest combo series we have ever offered.

To learn more, visit [garmin.com/marine2015](http://garmin.com/marine2015)

**GARMIN**®



**Having** just returned from South Carolina where the fishing was slow, club member Troy Winsor thought he should get up to Fraser Island where the reports said the little black marlin were biting. The weather looked good and his brother Rick had a few days before he had to fly out for work so Blade Runner was in. A call to Clinton Hicks and Reel Affair was a starter. Clinton called Greg Flynn who was keen to go as well so a plan was set. Robbie Flynn was bitter he wasn't allowed to go but after a few days of negotiations he managed to sneak on board.

The weather forecast stayed great and the reports said the fish were around the bait in about 15 meters of water at the top of the island.

The Reel Affair crew spent Saturday afternoon getting prepared making sure we had plenty of light tackle micro lures and small gar while Blade Runners crew spent the afternoon at the races.

We left Sunday morning for the 4 hour drive to Urangan, the trip was going well until just North of Gympie when Troy rang saying he was a couple of hours late as he had to repack with the heavy tackle gear as "Mistress had got into the Blues yesterday." Clinton swallowed the bait whole and Troy had the first hook up of the trip.

We had a smooth run up across Harvey Bay around Rooneys to a great anchorage and set up for the night. Kekoa had a chat to Troy on their way back to anchor and Alex Fenwick (SCGFC) came over and rafted up for dinner and drinks. As we were getting dinner sorted, we were all amazed as we watched Blade Runner convert from center console to a full cabin boat.

First thing Monday we were out through the Bar and saw birds working just outside. Reel Affair put the lures

out with Clinton on strike, and it wasn't long before he was hooked up. It turned out to be a Mac Tuna and after quick discussion on their quality as bait and in pokey bowls vs blood all over the boat was let swim away.

We headed south to in front of the sand hills to see if the marlin were down there. Greg was on strike next and we had 4 soft strikes and saw marlin stalking the lures around 9:30 but the hooks didn't stick. Robbie started asking to be on strike for the 6kg rod and was quickly put back in his box.

After 10 we hooked up and Greg landed the first Marlin of the trip. It was tiny! We were all amazed at how small it was.





Half an hour later we hooked up again with Robbie on strike and we got some great pics of this one with Kekoa in the background. After another hour we were on again a Clinton bought in a beautiful mini marlin to the boat. Blade Runner was off to a slower start but stuck to their switch baiting plan and managed 3 marlin, all on 4 kg.

We had been told the marlin bite slowed a lot in the afternoon, so we grabbed some livies and headed out to the 50M line to find a feed of reef fish. We managed a feed but there were so many sharks! And lots of current running against the wind. The day ended with another raft up for dinner and drinks and lots of stories of the day's adventures. Especially talking about how the little blacks would smash a bait just like the granders they will hopefully grow into.

Day two started with Robbie jumping ship onto Blade Runner to try switch baiting. As we started looking around, we found the bait was out a bit wider and despite marking plenty of bait and fish nothing happened on Reel Affair. We passed our time checking out the first whales of the season and some amazing aerobic displays from the local dolphins. At 10:10 we hooked a nice little black on the same micro green lure which had caught one the day before. Blade Runner had switched a couple at that stage and Greg nearly ran over whale that was stopped in our way.

We kept working the bait school that had delivered our 4 marlin so far. Just before 12 another little black smashed the little green lure and Clinton tagged another. With the wind and current we decided to stay in



close chasing marlin and Luke on Kekoa called Troy and said he had found them out where we had seen the bait in the morning. As soon as we arrived Reel Affair hooked up near Kelly snapped some great shots.

On Blade Runner, Robbie's first switch baited Marlin was a true micro and Troy was determined to find him a bigger one. Both boats kept working the area and Robbie got his second marlin on a switch bait and Clinton picked up his first on 6kg.

At 4pm we left them biting and after a good run through the bar raced back to anchorage. That night the raft up was full of talk this trips excitement and of what the next trip might entail. (Musgrave, Fraser again etc.) Robbie had the best time on Blade Runner switch baiting for the first time, he couldn't stop talking about it for the next few days.

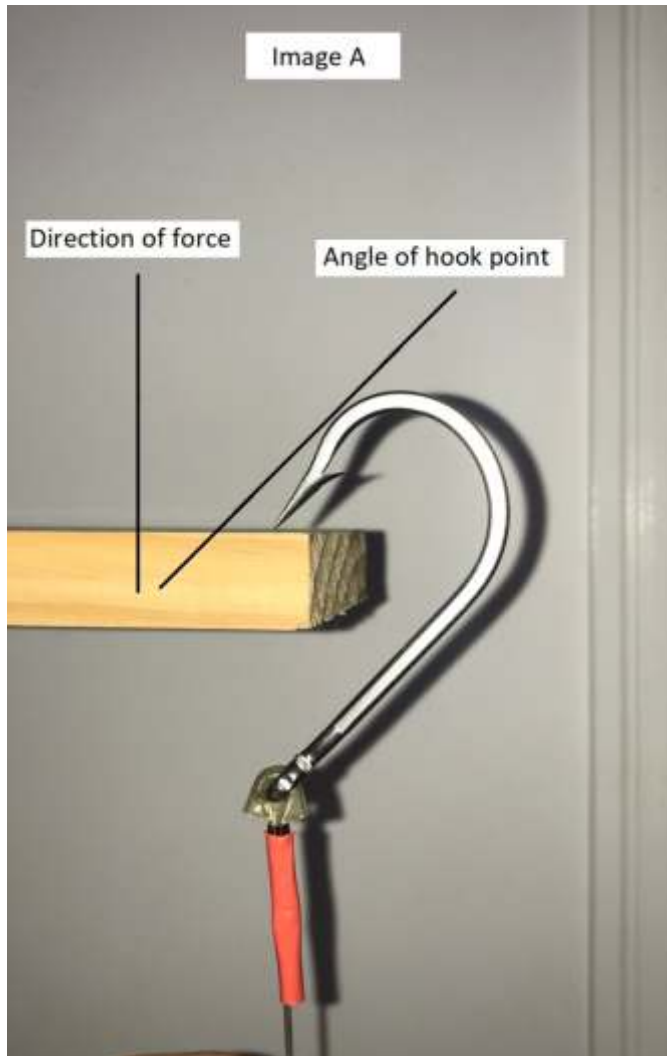
After a great sleep and a big breakfast, we set off for home. Reel Affair stopped for a quick troll in front of Wathumba and while we hook up tuna that took more 8kg than any of the marlin, unfortunately at the end of the first big run it was gone, bitten of at the snap swivel. From there we each had a quick visit from fisheries then finished the trip home and cleaned up.



## Stiff Rig vs Loose Rig

A topic hotly debated on what works best. We hear plenty of input from anglers of which type of rigging technique has 'proven' better for them, but rarely an explanation as to why. This article looks at the 'why'.

The truth of the matter, its quite simple. Certain styles of hook attachment will aid in ensuring the selected hook has the direction of force and the angle of the hook point working together. This will allow easier penetration, and increase hook up rates.

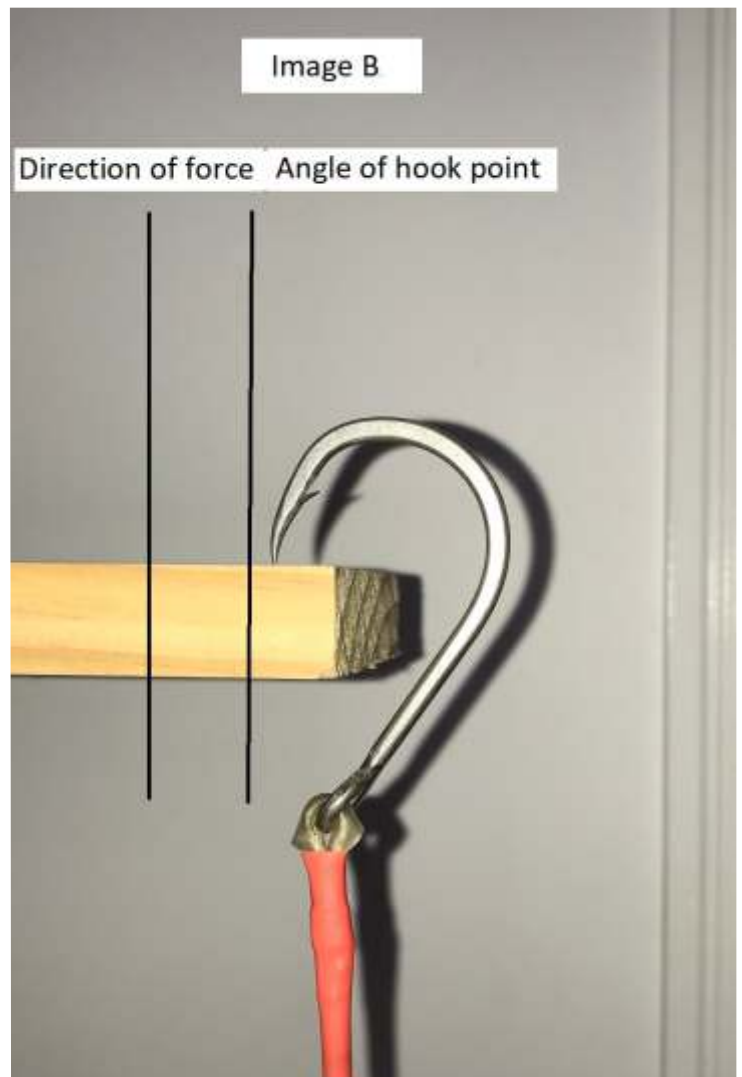


Firstly, we need to understand hook styles. Typically, for trolling hooks, there are 2 distinct hook patterns. 1st – The straight beak where the beak and hook point run parallel to the shank. 2<sup>nd</sup> – The curved beak where the point rounds back and points at the eye. It is these differences that drives the selection of stiff rigging or loose.

To explain, we offer a few simple photos to understand the dynamics.

### Image A

A straight hook loose rigged. You will note when pressure is applied down the line, the hook rolls back. This is because resistance is being applied off the line of momentum, so leverage evens things up. The problem here – The point is now facing almost 45 degrees away from the direction of force.



### Image B

A curved hook loose rigged. You will note when pressure is applied down the line, again, the hook rolls back. But, in contrast to the straight beak, this change in angle of the hook actually places the angle of the point directly in line with the direction of force, ensuring the point is driven in hard with least resistance.

### Image C

A straight hook stiff rigged. Unlike in Image A, the 'Stiffness' applied to the connection point at the eye, limits the hook roll. We now see that the hook point lines up with the direction of force. Once again, this reduces resistance, and the hook can be driven in cleanly.

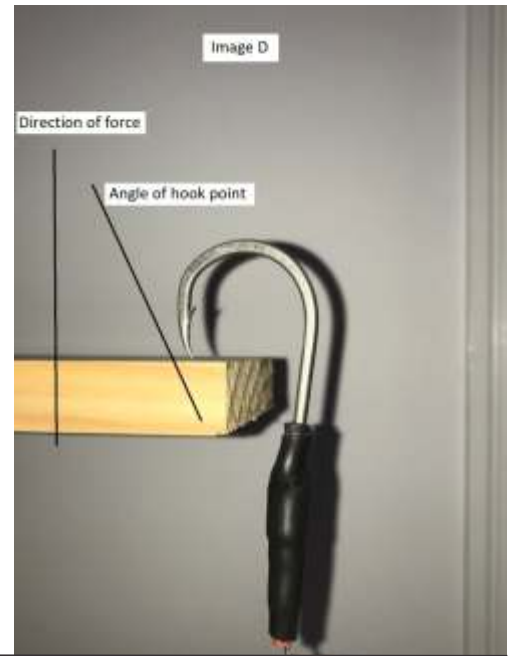


**Image C**

A curved hook stiff rigged. Now we see the other end of the spectrum. A big part of the design of the curved beak is to ensure when pressure applies down the line, the point is in line with force. The Stiff rigging however in this scenario, hinders that dynamic. The hook point is now pointing inwards at a 30 degree angle away from the line of force. However, as more force is applied, the hook can work against the stiff rigging and roll back into a better angle.

The results should be plain to see. Straight beaked hooks should ALWAYS be stiff rigged. Leaving them loose rigged will cost you fish. You also run the chance of rolling the hook point, which again, compounds even more lost fish. Stiff rigging a straight beak will ensure you have unhindered penetration on strike.

In contrast, curved beaks are better loose rigged. Yes, a stiff rig can work with them, but ideally we want that point lining up immediately as the fish strikes. Only solid takes will allow that hook roll into angle, soft bites will typically be dropped fish.



**Image D**

# KAIZEN FISHING CHARTERS



Light tackle - Black Marlin, Sailfish, various Tunas, Dolphin Fish (Mahi Mahi), Wahoo, Mackerel, Cobia.

Cairns to Lizard Island - September to December, Giant Black Marlin season including a host of other fishing options from casting poppers at GTs to bottom bouncing.

North Queensland Coast - Generally on the way up to Cairns in the Whitsundays Townsville region light tackle fishing including Hamilton Island and Townsville tournaments.

Port Stephens - December to April, Heavy tackle, Striped Marlin, Black Marlin, Blue Marlin, Dolphin Fish (Mahi Mahi)

email: [russell.caporn@bigpond.com](mailto:russell.caporn@bigpond.com) Ph:07 5478 3502 Mob:0417 657167



- Largest Bayside Fresh Bait Supply
- Custom Rods and Repairs
- 15% discount for MBGFC members (show QGFA membership card)

Serving Queensland Anglers for over 50 years  
 3/30 Shore Street West, Cleveland.

PH: 38211240 Email: [info@mossopsfishing.com.au](mailto:info@mossopsfishing.com.au)

# COUNTRY2 COAST 4X4

Redland Bay's 4x4 accessories and tyre specialists!

- Dual Batteries
- Snorkels
- Canopies
- Drawer Systems
- Camping Fridges
- Roof Racks
- GPS Map Systems
- Bullbars
- Winches
- Towbars
- Wheels & Tyres
- Driving Lights
- Camping Gear
- Awnings



Like us on Facebook for all the latest deals and updates!

[www.country2coast4x4.com.au](http://www.country2coast4x4.com.au)  
 07 3829 1258  
 5-11 Jardine Drive Redland Bay



## POP INTO YOUR LOCAL TELSTRA STORE WYNNUM

We're locals too, so we understand where you're from, where you want to go and what you are looking for when it comes to a mobile phone, home entertainment needs and more.

So call into your local Telstra Store Wynnum and discover a better way to connect.

Telstra Store Wynnum  
 Wynnum Plaza  
 Located outside Coles  
 ☎ 3893 3355



THINGS YOU NEED TO KNOW: The spectrum device and ™ are trade marks and © are registered trademarks of Telstra Corporation Limited ABN 33 051 775 556.

**0418 748 023**





TO: Mr John Wruck

Dear John,

My name is Robbie Flynn and I am a junior member of the Moreton Bay Game Fish Club. At last year's club Christmas party I was fortunate to be given very special rod and reel that you donated to the club. A Jack Erskine custom rod fitted with a Penn international 30 reel.

I had been wanting to get a 15 kg outfit for a long time and had been saving money from my part time jobs. I was so excited when I was given the rod and reel and first thing the next morning I respooled it with new 15kg line and practiced tying my doubles.

On Sunday my dad and I went fishing out at the Point Lookout Canyons, I was determined to run my new rod even though there had been a big Blue Marlin tagged there the day before.

I ran the rod in shotgun with one of my favourite lures. After lunch a marlin came into the spread and started attacking the short rigger, it made a couple of lunges before disappearing then coming up behind the new rod. It grabbed the lure and broke the band but didn't hook up. As I was retying the band it came back for another look. This time dad dropped the boat out of gear and it smashed the lure and hooked up cleanly.

The rod and reel was great to use with a nice action and smooth drag. We initially thought it was a stripped marlin but as we got a better look at the fish we realised it was a black. Dad managed some nice photos and we tagged and released the fish.

Thank you so much for your generous donation to the club. Your rod will always be special to me (and I am sure to the other lucky juniors who received them.) and I hope to catch many more fish with it.

Kind Regards  
Robbie Flynn



# SPONSOR CONTACTS

## AQUA MOBILE MARINE

PHONE: 0418 748 023

EMAIL: [jim@aquamobilemarine.com.au](mailto:jim@aquamobilemarine.com.au)



## BCF

PHONE: (07) 3482 7858

EMAIL: [-sales@superretailgroup.com](mailto:-sales@superretailgroup.com)



## BE A HERO

PHONE: (07) 3103 0434

EMAIL: [admin@beahero.org.au](mailto:admin@beahero.org.au)



## BESHEEK HAIR & MAKEUP

PHONE: 0401 612121

EMAIL: [beesheekhair@live.com](mailto:beesheekhair@live.com)



## BELLS PURE ICE

PHONE: 1300 723 557

WEB: [www.bellspureice.com.au](http://www.bellspureice.com.au)



## BOATING & RV

PHONE: (07) 3823 5055

EMAIL: [aaron@boatingandriv.com.au](mailto:aaron@boatingandriv.com.au)



## BRISBANE DRILLING & SAWING

PHONE: 0412 152 889

EMAIL: [pditchfi@bigpond.net.au](mailto:pditchfi@bigpond.net.au)

## BURSONS AUTO PARTS

PHONE: (07) 3394 2311

EMAIL: [mail@hoffmankelly.com.au](mailto:mail@hoffmankelly.com.au)



## COUNTRY 2 COAST 4X4

PHONE: (07) 3829 1258

WEB: [country2coast4x4.com.au](http://country2coast4x4.com.au)



## FISHTRACK

WEB: [www.fishtrack.com/fishing-charts/queensland\\_58657](http://www.fishtrack.com/fishing-charts/queensland_58657)



## FOREMOST PLASTICS PTY LTD

PHONE: (07) 3217 9177

EMAIL: [foremost\\_plastics@bigpond.com](mailto:foremost_plastics@bigpond.com)



## GARMIN MARINE

PHONE: 0458 258152

EMAIL: [wayne.thomsen@garmin.com](mailto:wayne.thomsen@garmin.com)



## HOMES 4 LIVING

PHONE: 0438 427263

WEB: [www.homes4living.com.au](http://www.homes4living.com.au)



## IONNIC PTY LTD

PHONE: (07) 3274 3077

EMAIL: [karen@aeimports.com](mailto:karen@aeimports.com)



## IMPACT LURES

PHONE:- 0409 540 226

For information see Impact Lures Facebook page.



## J&J BATTERIES PTY LTD

PHONE: (07) 3396 4806

EMAIL: [jjbatteries@optusnet.com.au](mailto:jjbatteries@optusnet.com.au)



## JOTUN

PHONE: (07) 3290 1444

EMAIL: [tony.bishop@jotun.com.au](mailto:tony.bishop@jotun.com.au)



## KAIZEN CHARTERS

PHONE: (07) 5478 3502

EMAIL: [russellcaporn@bigpond.com](mailto:russellcaporn@bigpond.com)



## LOCAL BATTERIES

PHONE: (07) 3390 2146



## MARINE RECOVERY GROUP

Phone: 0421 570475

EMAIL: [admin@maritimerecoverygroup.com.au](mailto:admin@maritimerecoverygroup.com.au)

## MORETON ISLAND ADVENTURES & MICAT FERRY

PHONE: (07) 3909 3333

EMAIL: [bookings@moretonislandadventures.com.au](mailto:bookings@moretonislandadventures.com.au)



## MORETON ISLAND FISHING CHARTERS

PHONE: 04133 128056

EMAIL: [moretonislandfishingcharters@gmail.com](mailto:moretonislandfishingcharters@gmail.com)



## MOBILE FASTENERS

PHONE: 0404 887 988

## MOSSOPS TACKLE WORLD

PHONE: (07) 3821 1240

EMAIL: [info@mossopsfishing.com.au](mailto:info@mossopsfishing.com.au)



## PRECISION RODS

PHONE: 0439772010.

EMAIL: [info@precisionrods.com.au](mailto:info@precisionrods.com.au)



## PAKULA TACKLE

PHONE: (07) 5537 4689

EMAIL: [pakula@bigpond.net.au](mailto:pakula@bigpond.net.au)



## PETER HANSEN YACHT BROKERS

PHONE: (07) 3821 4144

EMAIL: [peterhansensales@rabybaymarina.com](mailto:peterhansensales@rabybaymarina.com)



## PLATYPUS FISHING LINES

PHONE: (07) 3881 1522

EMAIL: [info@fishplatypus.com.au](mailto:info@fishplatypus.com.au)



## POSEIDON LURES

For contacts and information see the Poseidon Lures Facebook page



## PROLUBE LUBRICANTS

PHONE:-(07) 3881 1733  
EMAIL: [admin@prolube.com.au](mailto:admin@prolube.com.au)



## REDLAND BAY GARAGE

PHONE: (07) 3206 8405  
EMAIL: [redlandbaygarage@bigpond.com](mailto:redlandbaygarage@bigpond.com)

## REDLAND SPORTING CLUB

PHONE: (07) 3207 1133  
EMAIL: [rsc@rsc.asn.au](mailto:rsc@rsc.asn.au)



## REELAX ENTERPRISES

PHONE: (07) 3299 6666  
EMAIL: [accounts@reelax.com.au](mailto:accounts@reelax.com.au)



## ROGERS & LOUGH PTY LTD

PHONE: (07) 3399 3433  
WEB: [www.rlmarine.com.au](http://www.rlmarine.com.au)



## SCHOOL SITE SOLUTIONS

PHONE: (07) 3822 5042  
EMAIL: [jacinta@schoolsitesolutions.com.au](mailto:jacinta@schoolsitesolutions.com.au)

## SCORPION AWD

PHONE: (07) 3245 4342  
EMAIL: [scorpionawd@bigpond.com](mailto:scorpionawd@bigpond.com)



## SHAMROCK CIVIL ENGINEERING

PHONE: 07 37271100  
EMAIL: [shamrock@shamrockcivil.com.au](mailto:shamrock@shamrockcivil.com.au)



## SPECIALISED BUILDING PRODUCTS (SBP) AUSTRALIA

PHONE: 07 3270 2200  
EMAIL: [tony@sbpa.com.au](mailto:tony@sbpa.com.au)  
WEB: [www.sbpa.com.au](http://www.sbpa.com.au)



## STRATCO

PHONE: (07) 3451 4444  
WEB: [www.stratco.com.au](http://www.stratco.com.au)



## STATEWIDE SURVEY GROUP

PHONE: 1300 362 094  
WEB: [www.statewidesurvey.com.au](http://www.statewidesurvey.com.au)



## SUSTAINABLE MINING STRATEGIES

PHONE: 0438 106707  
EMAIL: [ncurrey@sustainableminingstrategies.com.au](mailto:ncurrey@sustainableminingstrategies.com.au)

## SUPER IGA

PHONE: 0417 721100  
EMAIL: [dinorosa@me.com](mailto:dinorosa@me.com)



## TELSTRA STORE WYNNUM

PHONE: (07) 3893 3355  
WEB: [www.telstra.com.au](http://www.telstra.com.au)



## TACKLE WAREHOUSE

PHONE: (07) 3398 6500  
WEB: [www.tacklewarehouse.com.au](http://www.tacklewarehouse.com.au)



## TOOL VAN SERVICES SOUTHSIDE

PHONE: (07) 0412 877 002  
EMAIL: [toolvanservicessouthside@gmail.com](mailto:toolvanservicessouthside@gmail.com)



## TRITECH REFRIGERATION

PHONE: (07) 3276 7411  
EMAIL: [ian@tritechrefrigeration.com.au](mailto:ian@tritechrefrigeration.com.au)

## WURTH AUSTRALIA

PHONE: (07) 1300 657 765



CLONTARF  
MULLUMBIMBY

PHONE:-0417 721100  
EMAIL:-dinorosa@me.com

At IGA, we've never taken a 'one size fits all' approach to the way we do business

Through our network of independently owned stores we tailor our ranges and brands to give our local customers more of what they like. This includes many of your favourite brands, the ones you may no longer find on shelves in other supermarkets.

We proudly support Aussie producers too by stocking ranges of locally made products.



Whether you own a yacht, powerboat, sailboat or jet ski, Boating & RV has an extensive selection of boating supplies and boat parts at competitive prices.

Boating & RV also specialises in quality caravan and RV supplies from the biggest brands to equip you for your travels.

As the experts in the Australian marine chandlery business, we bring you high-quality boat parts and caravan accessories backed by our superior customer service. Our experienced staff are all boating people, and just like you, we like to fish, sail and explore too!

PHONE:-(07) 3823 5055 EMAIL:-aaron@boatingandr.com.au

# Barbecue Chilli Prawns

1kg peeled green prawns  
 2 garlic gloves crushed  
 3 tablespoons sweet chilli sauce  
 2 tablespoons oyster sauce  
 1 tablespoon soy sauce  
 Garnish with thinly sliced red chilli and spring onion  
 Lime wedges

In a bowl, cover the prawns with the combined ingredients. If possible allow the prawns to marinate for a couple of hours. Place the prawns on a medium heat barbecue plate and cook until they change colour. Serve on a bed of rice and garnish with the sliced red chilli and spring onions and squeeze over with the lime wedges.



*switchbait*

www.switchbait.com.au

All art remains property of Switchbait. Art cannot be replicated or distributed without prior written consent. Switchbait match all colours to the Pantone Matching System. Colours on screen will vary from finished product.

Clinton Hicks

Version 1

Polo

- PMS 289
- PMS 299
- 10% Black

## SHIRTS FOR SALE - \$65



Approved: \_\_\_\_\_

Sign

## MORETON BAY GAME FISH CLUB

### CLUB FISHING RULES

1. Fish must be captured or tagged in accordance with the MBGFC rules, which follow the rules of GFAA. MBGFC rules include the following key points, based in Queensland and QGFA guidance:
  - a. A fish gaffed for weighing points cannot be tagged and released;
  - b. Every effort should be made to release tagged fish in a healthy state;
  - c. Capture of gamefish species will comply with QLD DPI Fisheries bag limits and lengths;
  - d. All edible fish to be weighed for points may be gilled and gutted on capture and an additional 10% added to weight of the fish;
  - e. Sharks (as per QLD Fisheries) – “cannot be in possession over 1.5m in length, MBGFC encourages tagging of all sharks;
  - f. MBGFC promotes tagging of all billfish using NSW DPI Fisheries tags, unless it is a potential record;
  - g. All QGFA, GFAA, IGFA potential record claims must comply with GFAA rules and all the correct paperwork, measurements, photos etc submitted with a claim.
2. MBGFC fishing grounds are “Queensland Local Waters” ranging from QLD/NSW border (in South), to a line east of Double Island Point (in North)
3. MBGFC has a number of annual trophies including an “Out of Zone” trophy for fish caught outside of “Local Waters”.
4. Light tackle (1-10kg) line test can be used in all waters.
5. Heavy tackle (15-60kg) line test can only be used in waters over 150m deep.
6. Fish captures or tags will only be accepted for Club and QGFA points if;
  - A. Claims are submitted on MBGFC capture sheet / QGFA Activity Book and all details filled in;
  - b. Tag claims are submitted with filled in NSW DPI Tag Card;
  - c. Is received by Club Secretary or PO Box 371, Capalaba, QLD, 4157; no later than one month after capture/tagging.
7. Sportsmanship and consideration to others should be the mark of MBGFC members;
8. All boat skippers have a Duty of Care to ensure vessels are seaworthy, insured and safety of crews are first consideration.

### MBGFC CLUB POINTS

Capture points listed for Billfish apply only for captures in excess of the following: Marlin (Blue, Black, Broadbill Swordfish) – 100kg, Marlin (striped) – 75kg, Sailfish – 35kg. Points halved below these weights.

	LIGHT TACKLE (Any water depth)							HEAVY TACKLE (over 150m deep)			
Line Class (kg)	1	2	3	4	6	8	10	15	24	37	60
<b>BILLFISH</b> tag points	5000	4000	3000	2500	2000	1500	1000	3000	2500	2000	1500
<b>BILLFISH</b> capture points/kg	150	100	75	50	25	15	10	50	35	15	10
<b>TUNA - Longtail/Yellowfin</b>											
Tuna Tag points	2000	1000	600	500	400	300	200	150	100	100	100
Tuna Capture Points/kg	200	150	50	35	25	15	10	7.5	5	3	2
<b>OTHER SPECIES</b> tag point	500	400	300	250	200	150	100	75	75	75	75
Other SPECIES capture pts/kg	100	50	35	25	20	15	10	7.5	5	3	2
<b>SHARK</b> Tag point	500	400	300	250	200	150	100	75	75	75	75
SHARK Capture points/kg	100	50	35	25	20	15	10	7.5	5	3	2

Updated: 1<sup>st</sup> July 2018

## MORETON BAY GAME FISH CLUB LTD. MORETON ISLAND CLUB HOUSE AND LAND RULES

Effective 15<sup>th</sup> July 2015

1. All members wishing to use the Club facilities must notify the Secretary to obtain approval. Approval will only be considered if the Member has already signed a "Application for permission of MBGFC Ltd to enter upon land at Moreton Island" Form 37 for the current financial year or lodging an application. If applicant is under age of 18 years the application must be signed by both the applicant and a legal guardian. Each person staying at the Club land must sign a separate form. Club Land is for the use of members and their immediate family only (i.e. partner and children). Members may invite guests to stay at the club land on a one off introduction basis (fill in Form 37a). These guests would be expected to join the club if revisiting.
2. **FEES** are payable in advance are:
  - Members Tent Sites:** \$35.00 per night includes 2 adults & 2 children plus \$10.00 per extra adult and \$5.00 per extra child on the same site.
  - Guests Tent Sites:** \$45.00 per night includes 2 adults & 2 children plus \$10.00 per extra adult and \$5.00 per extra child on the same site.
  - Caravan:** \$50.00 per night includes 2 adults & 2 children plus \$10.00 per extra adult and \$5.00 per extra child.
  - Moorings:** Use of moorings is free for club members but if clubhouse facilities (showers & BBQ etc.) are used, a fee of \$10.00 per day per person will apply.
3. **BOOKINGS** will only be accepted through the Club Secretary; but fees must be paid in advance: Postal: P.O. Box 371, Capalaba QLD 4157 Email: [admin@mbgfc.com.au](mailto:admin@mbgfc.com.au)
4. **ACCESS TO LAND AND USE OF VEHICLES AND TRAILERS:** All access is via the access roads only. No vehicles or trailers are to be driven on Club Land (except for unloading & loading) and all Members are requested to park vehicles in an orderly fashion allowing room for others.
5. **SHOWERS AND TOILETS:** Members are requested to hose out these areas daily and to use the stainless steel troughs to wash sand off feet before entering.
6. **BARBECUES:** The barbecues are to be cleaned well after use including drip trays and burners.
7. **KITCHEN:** The facilities are available and all refrigeration and freezer units are to be left open when no longer in use and power is to be turned off. All kitchen utensils, counters, fridges and floors must be cleaned upon departure from the Club Land. Hot water system to be left on standby upon departing Club Land.
8. **GENERATOR SHED and POWER:** Generator is to be run morning (3 hours) and evenings only (sunset till 10 pm) latest. See instructions for turning on and off. The generator shed is not to be used for storage of anything whatsoever. If possible bring diesel across for Genset and put into 200L drums – club will reimburse receipts.
9. **WATER:** Numerous taps are located around Club Land. Please use the sprinklers when possible.
10. **BUILDINGS AND GROUNDS:** Members are requested to spend a little time carrying out any maintenance needed, if it is within their capabilities. Any damaged or broken facilities to be reported promptly to a committee member or Club Secretary. All facilities to be cleaned, and locked up upon departure and keys returned to Club Secretary promptly. Welcome to assist with gardening and site upkeep for the benefit of all and preservation of the area.
11. **FIREWOOD and PETS:** Moreton Island is a declared National Park and the cutting and gathering of wood is prohibited. Pets are prohibited on Moreton Island and hence on Club Land.
12. **RUBBISH:** All rubbish is to be removed from Club Land either to the public dump at Cowan or taken off the island. Fish are only to be cleaned on the outside stainless steel bench and thoroughly cleaned after use. All frames and gut are to be immediately disposed of in the sea, but not in area immediately in front of Club Land.
13. **VEHICLE PERMITS:** Permits must be obtained to take your vehicle on Moreton Island.
14. **ABUSE OF RULES:** Committee Members have the authority to ask any tenants or visitors on Club property to leave should any abuse of the above rules occur. The Committee will act on such matter.

## NEW GENERATOR STARTING AND STOPPING PROCEDURES

### Starting

1. Unlock shed and do a visual check for oil/radiator leaks or damaged pipes etc.
2. Check the oil level, the dip stick has a yellow top.
3. Check the water in radiator, when engine is COLD, top up fluids using the radiator fluid or if none available clean fresh water.
4. Check the fuel in generator, it is a brass coloured cap, this must be filled daily as it is on a small tank. Fill from the 200L Drums to 20L jerry can via funnel or pump from Green 200L drum (generator tank will only run for 15 hours).
5. Turn the ignition key on and then press and hold the green button on panel until the engine starts.
6. Switch the three large breakers “on” they are pushed “up” for on.
7. Power is now running.
8. Close shed door.

### Shut Down.

1. Unlock shed and do a visual check for oil/radiator leaks or damaged pipes etc.
2. Switch the three large breakers “off” – into the down position.
3. Turn the generator ignition key to off position. Generator will stop.
4. Refill the fuel in generator, it is a brass coloured cap, this must be filled daily as it is on a small tank. Fill from Green 200L drum.
5. Close shed door and lock up.

## DO NOT RUN GENERATOR OUT OF FUEL

### THE HOT WATER SYSTEM

Should be left on at all times.

When arriving remove the cover from the hot water system and turn the knob from vacation to hot, the pilot light will ignite the main burner, refit the cover. When locking up to leave the club again remove the cover and turn the knob on hot water system to vacation. Replace the cover and lock the cage.

### SUNDRY

The BBQ gas bottle is kept in the kitchen. When leaving, make sure the grease tray on the BBQ has been cleaned out.

Clean out fridge and wipe out. Use the wet vacuum to suck out the water.

Fridges and 240 volt light switches can be left on, but ensure the 12 volt LED lights are turned off before leaving.

Toilets must be cleaned, rubbish removed and all hoses and tools locked away.

Any breakages or anything that requires maintenance must be reported to the Club Secretary as this will assist to keep on top of repairs.

Please make sure that these procedures are adhered to. If in doubt or do not understand any of the procedures contact John Moore on 0434 344 228 or David Hutton on 0411 725 299 or Paul Ditchfield on 0412152 880.

